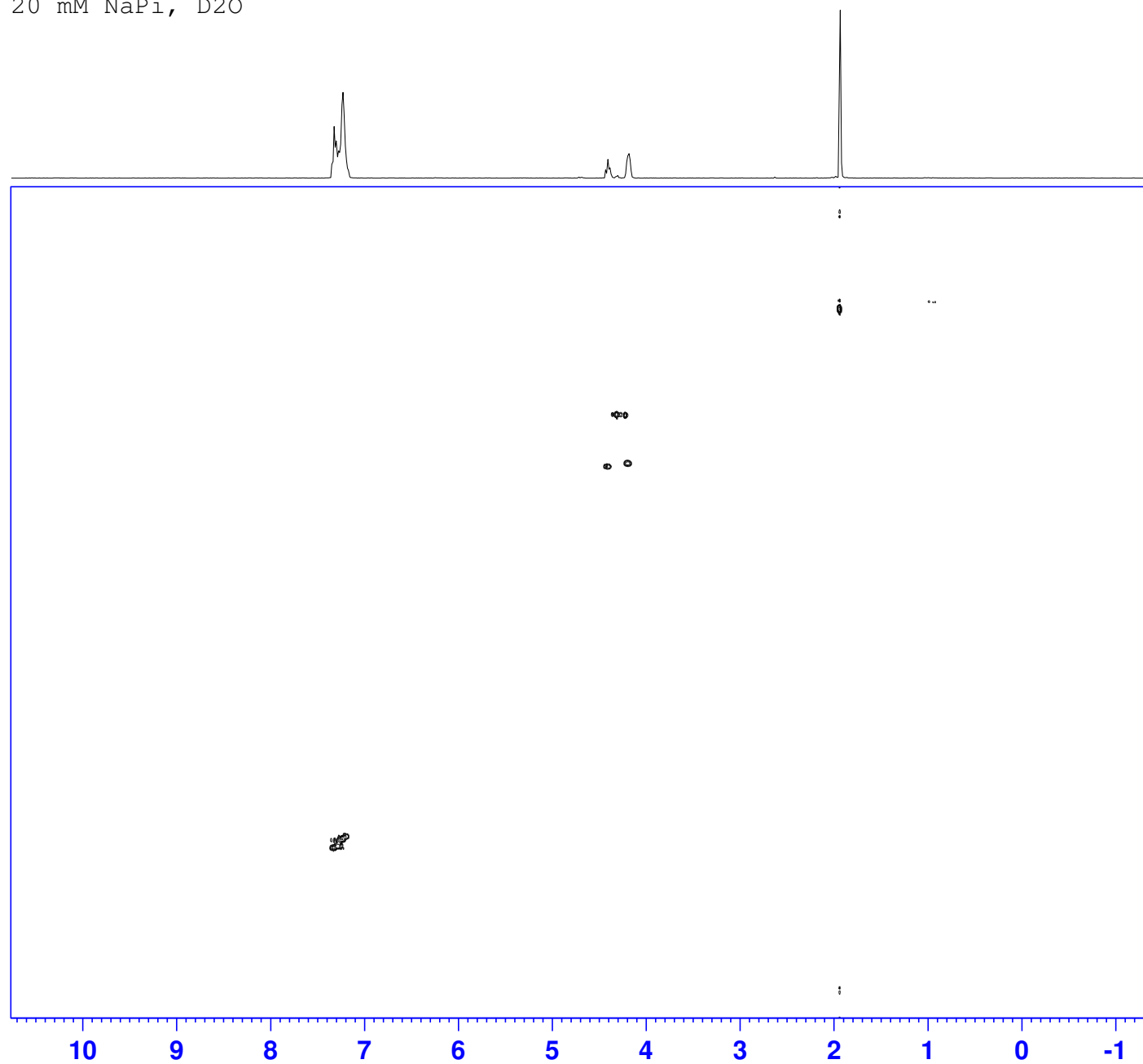


Group VG
pH 8.56, 20 mg/mL
20 mM NaPi, D2O

NMRO@CHEM.OX



Current Data Parameters
NAME Ac-Bal-NHBn_pHdependency
EXPNO 13
PROCNO 1

F2 - Acquisition Parameters
Date_ 20191208
Time 6.06 h
INSTRUM Avance
PROBHD z116098_0219 (
PULPROG hsqcetdgppsp.3
TD 2048
SOLVENT D2O
NS 25
DS 32
SWH 4854.369 Hz
FIDRES 4.740595 Hz
AQ 0.2109440 sec
RG 101
DW 103.000 usec
DE 6.50 usec
TE 298.2 K
CNST2 145.0000000
D0 0.00000300 sec
D1 1.00000000 sec
D4 0.00172414 sec
D11 0.03000000 sec
D16 0.00020000 sec
D21 0.00360000 sec
IN0 0.00003013 sec
TDav 1
SFO1 400.1318806 MHz
NUC1 1H
P1 10.00 usec
P2 20.00 usec
P28 1000.00 usec
PLW1 16.35899925 W
SFO2 100.6208175 MHz
NUC2 13C
CPDPRG[2] garp
P3 10.00 usec
P14 500.00 usec
P31 2119.00 usec
PCPD2 80.00 usec
PLW0 0 W
PLW2 73.73300171 W
PLW12 1.15209997 W
SPNAM[3] Crp60,0.5,20.1
SPOAL3 0.500
SPOFFS3 0 Hz
SPW3 11.26599979 W
SPNAM[18] Crp60_xfilt.2
SPOAL18 0.500
SPOFFS18 0 Hz
SPW18 2.17020011 W
GPNAM[1] SMSQ10.100
GPZ1 80.00 %
GPNAM[2] SMSQ10.100
GPZ2 20.10 %
P16 1000.00 usec

F1 - Acquisition parameters
TD 256
SFO1 100.6208 MHz
FIDRES 129.694962 Hz
SW 164.985 ppm
FnMODE Echo-Antiecho

F2 - Processing parameters
SI 1024
SF 400.1300000 MHz
WDW QSINE
SSB 2
LB 0 Hz
GB 0
PC 1.40

F1 - Processing parameters
SI 1024
MC2 echo-antiecho
SF 100.6127685 MHz
WDW QSINE
SSB 2
LB 0 Hz
GB 0